

TECHNICAL DATA

ROLF BENZ 3300



**ROLF
BENZ**

Sofa

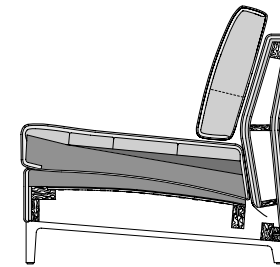
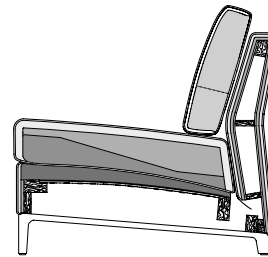
- Cover quilted underneath with non-woven polyester
- Downy-soft cushions worked into ticking chambers with a filling of foam rods and polyester fibres, covered with non-woven polyester
- Back pad in polyether foam
- Wooden inner frame
- No-sag spring support (upholstered seat and upholstered bench without spring support)
- Leg in cast aluminium
- "Medium" seat construction:
Seat in polyether foam, built up in coordinated layers varying in height and firmness covered with a downy-soft mat worked into ticking chambers and filled with foam rods and polyester fibres
- "Firm" seat construction:
Seat in polyether foam, built up in coordinated layers varying in height and firmness, covered with a non-woven/foam composite mat
- Seat height available in 45 or 47 cm



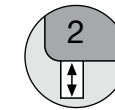
"Firm" seat construction



"Medium" seat construction



Seat heights available

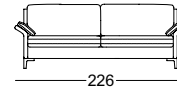
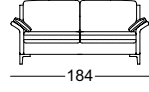
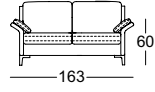
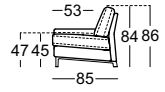


- ! Wave formation and depressions in the seat area are unavoidable, due to comfort and design reasons, even in high quality Rolf Benz upholstered furniture.
All measurements are approximate.

**ROLF
BENZ**

Armchair

Sofa



Footstool

Upholstered bench element

Headrest

